

**GLOBAL**

**ALLIANCE FOR**

**CHRONIC**

**DISEASES**



**Implementation Science Research Training School**  
**6 – 10 November 2018**



## Contents

<b><i>Programme Overview</i></b> .....	<b>2</b>
<b><i>School Programme</i></b> .....	<b>3</b>
<b>Tuesday 6 November (Day 1)</b> .....	<b>3</b>
<b>Wednesday 7 November (Day 2)</b> .....	<b>4</b>
<b>Thursday 8 November (Day 3)</b> .....	<b>5</b>
<b>Friday 9 November (Day 4)</b> .....	<b>6</b>
<b>Saturday 10 November (Day 5)</b> .....	<b>7</b>
<b><i>Information about the venue</i></b> .....	<b>8</b>
<b><i>List of Participants</i></b> .....	<b>12</b>
<b>Workshop Faculty, Facilitators &amp; Panellists</b> .....	<b>12</b>
<b>Workshop Participants</b> .....	<b>17</b>



## **Implementation Science Research Training School**

**6-10 November 2018, Campinas, Brazil**

The São Paulo Research Foundation (FAPESP) in collaboration with the Global Alliance for Chronic Diseases (GACD) will be holding a 5-day implementation science school in Campinas, Brazil from 6-10, November 2018. This School will be facilitated by some of the field's most prominent global experts in implementation science and aims to:

- Introduce early- and mid-career researchers to the field of dissemination and implementation science.
- Inform, through practitioners, policymakers and researchers, how to study and implement research findings into policy and practice.
- Expand on this field of science with regards to the use of theoretical models, study design measurement.
- Illustrate ways of collaborating and networking more globally.
- Showcase examples of implementation research and the uptake of research findings into policy and practice.

### **The Faculty will include:**

**Professor Brian Oldenburg** – University of Melbourne, Australia & Head, WHO Collaborating Centre on Implementation Research for Prevention & Control of NCDs

**Celina Gorre**, Executive Director, Global Alliance for Chronic Diseases

**Professor Fernando Cendes** – University of Campinas and BRAINN (Brazilian Institute of Neuroscience and Neurotechnology), SP, Brazil

**Dr. Ed Gregg** – US Centers for Disease Control, USA

**Professor Li Li Min** – University of Campinas and BRAINN, Brazil

**Professor Paulo Saldiva** – University of São Paulo, Brazil

**Professor Pilvikki Absetz** – University of East Finland, Finland

**Dr. Rachel Sturke** – Fogarty International Center, National Institutes of Health, USA

**Associate Professor Rodrigo Moreno-Serra** – University of York, UK

**Dr Sailesh Mohan** – Public Health Foundation of India, India

**Professor Victor Wünsch Filho** – Public Health School, University of São Paulo, SP, Brazil

**Dr. Vilma Irazola** – Instituto de Efectividad Clínica y Sanitaria (IECS), Argentina & Harvard T.H. Chan School of Public Health, USA

**Tuesday 6 November (Day 1)**

What is implementation science and identifying a feasible and important question?

8.00am - 9.00am	Registration
9.00am - 9.30am	<b>Welcome and opening remarks</b> <ul style="list-style-type: none"> <li>• Sao Paulo Research Foundation</li> <li>• GACD</li> <li>• Faculty</li> </ul>
9.30am – 10.15am	<b>Introductions at participants’ tables</b> Participants to write down 2-3 objectives to achieve by the end of the Implementation Science School <b>Plenary discussion</b>
10.00am - 1.00am	<b>An overview of implementation science: What is it? Key concepts, models and issues (1)</b> Brian Oldenburg, University of Melbourne, Australia
11.00am - 11.30am	Coffee break
11.30am - 12.30pm	<b>An overview of implementation science: What is it? Key concepts, models and issues (2)</b> Brian Oldenburg, University of Melbourne, Australia
12.30pm - 1.30pm	Lunch
1.30pm – 2.45pm	<b>Breakout groups (1)</b> – Each participant to introduce their project and to highlight their project aims, questions and use of theory Brian Oldenburg, University of Melbourne, Australia and Faculty
2.45pm – 3.00pm	<b>Plenary session – 3 quick key learnings from each group</b>
3.00pm - 3.30pm	Coffee break
3.30pm – 4.45pm	<b>Study questions, study designs and types of evidence for implementation science</b> Vilma Irazola – Instituto de Efectividad Clinica y Sanitaria (IECS), Argentina
4.45pm – 5.00pm	Learnings for the day
6.30pm onwards	Reception at CPV Hotel for networking

**Wednesday 7 November (Day 2)**

Study Design and Measurement

---

9.00am - 9.30am	<b>Introduction</b> Learnings from Day 1 and plans for Day 2
9.30am - 10.30am	<b>Building the evidence base for D&amp;I research – what, how and with whom?</b> Ed Gregg – US Centers for Disease Control, USA Rachel Sturke – Fogarty International Center, National Institutes of Health, USA
10.30am - 11.00am	<b>Coffee break</b>
11.00am-12.30pm	<b>Interventions and measurement at different levels</b> Ed Gregg – US Centers for Disease Control, USA Rachel Sturke – Fogarty International Center, National Institutes of Health, USA
12.30pm - 1.30pm	<b>Lunch</b>
1.30pm -2.30pm	<b>Breakout groups (2)</b> – Participants to discuss their study design and measures. Ed Gregg – US Centers for Disease Control, USA Wilma Irazola – Instituto de Efectividad Clínica y Sanitaria (IECS), Argentina Faculty
2.30pm – 2.45pm	<b>Plenary session – 3 key learnings from each group</b>
2.45pm – 3.15pm	<b>Coffee break</b>
4.00pm - 5.00pm	<b>Implementation Science and Scale up Challenges in LMICs</b> - Case studies from faculty and their learnings  Sailesh Mohan – Public Health Foundation of India, India
5.00pm - 5.15pm	Learnings for the day
5.15pm - 9:15pm	Bus leaving for Happy Hour at “LADO B BAR”. First drink will be complementary; then on your own. <a href="http://www.barladob.com.br/">http://www.barladob.com.br/</a>

---

**Thursday 8 November (Day 3)**

Theory, Interventions and their delivery

9.00am - 9.30am	<b>Introduction</b> Learnings from Day 2 and plans for Day 3
9.30am - 10.30am	<b>Models, frameworks and theory for program design, implementation and evaluation</b> Pilvikki Absetz – University of East Finland, Finland
10.30am - 11.00am	<b>Coffee break</b>
11.00am-12.30pm	<b>Using conceptual models and theory - Case studies from faculty</b>  Pilvikki Absetz – University of East Finland, Finland and Faculty
12.30pm - 1.30pm	<b>Lunch</b>
1.30pm - 2.30pm	<b>Breakout groups (3)</b> – Use of theory and models in participants’ projects Pilvikki Absetz – University of East Finland, Finland Sailesh Mohan – Public Health Foundation of India, India
2.30pm – 2.45pm	<b>Plenary session – 3 key learnings from each group</b>
2.45pm - 3.15pm	<b>Coffee break</b>
3.15pm - 4.45pm	<b>Developing a career in a global world: Working in teams, cross-disciplinarity, mentoring, funding, training and global networking</b> Brian Oldenburg, University of Melbourne, Australia Pilvikki Absetz – University of East Finland, Finland
4.45 – 5.00pm	Learnings for the day

**Friday 9 November (Day 4)**

Context and translation into policy and practice

9.00am - 9.30am	<b>Introduction</b> Learnings from Day 3 and plans for Day 4
9.30am - 10.30am	<b>Cultural adaptation and context for program design, implementation and evaluation</b> Rachel Sturke – Fogarty International Center, National Institutes of Health, USA
10.30am - 11.00am	Coffee break
11.00am-11.45pm	<b>From surveillance to natural experiments and population monitoring</b> Ed Gregg – US Centers for Disease Control, USA
11.45pm – 12.30pm	<b>Stakeholder engagement and community-based participatory approaches</b> Vilma Irazola – Instituto de Efectividad Clínica y Sanitaria (IECS), Argentina
12.30pm - 1.30pm	Lunch
1.30pm -2.45pm	<b>Breakout groups (4)</b> – Planning for project presentations on Day 5
2.45pm – 3.15pm	Coffee break
3.15pm - 4.45pm	<b>Panel Roundtable: How to make sure that your research findings do not get lost in translation?</b> Course faculty and senior policy- and decision-makers from policy, practice and research organisations will participate Brian Oldenburg – University of Melbourne, Australia Fernando Cendes – University of Campinas, Brazil Li Li Min – Universidade de Campinas, Brazil Paulo Saldiva – University of São Paulo, Brazil Rodrigo Moreno-Serra – University of York, UK Victor Wünsch Filho – University of São Paulo, SP, Brazil Angela Dannemann – Itaú Social, Brazil Celina Gorre – GACD Secretariat, United Kingdom
4.45pm-5.00pm	Learnings for the day

**Saturday 10 November (Day 5)**

Putting it all together

9.00am - 10.30am	Presentations from groups & discussion
10.30am - 11.00am	Coffee break
11.00am-12.30pm	Presentations from groups & discussion
12.30pm - 1.30pm	Lunch
1.30pm -2.00pm	<b>GACD</b> Celina Gorre, Executive Director, Global Alliance for Chronic Diseases
2.00pm – 2.45pm	<b>Building capacity for implementation science in LMIC – Training and funding</b> Brian Oldenburg, University of Melbourne, Australia Rachel Sturke – Fogarty International Center, National Institutes of Health, USA
2.45pm – 3.15pm	Coffee break
3.15pm-4pm	Concluding comments, feedback and Evaluation



---

## City of Campinas

---

Campinas (Portuguese pronunciation: [kɛ̃ˈpinɐs], *Plains* or *Meadows*) is a Brazilian municipality in São Paulo State, part of the country's Southeast Region. According to the 2010 Census, the city's population is 1,080,999, making it the fourteenth most populous Brazilian city and the third most populous municipality in São Paulo state. The city's metropolitan area, Metropolitan Region of Campinas, contains twenty municipalities with a total population of 3,656,363 people.

See more at <https://en.wikipedia.org/wiki/Campinas>.

---

## University of Campinas (UNICAMP)

---

The **University of Campinas** (Portuguese: *Universidade Estadual de Campinas*), commonly called **Unicamp**, is a public research university in the state of São Paulo, Brazil. Unicamp is consistently ranked among the top universities in Brazil and Latin America. Unicamp is responsible for around 15% of Brazilian research, a disproportionately high number when compared to much larger and older institutions in the country such as the University of São Paulo. It also produces more patents than any other research organization in Brazil, being second only to the state-owned oil company, Petrobras. Multiple international university rankings place it amongst the best universities in the world, with QS placing it in the Top 200 globally and ranking it the 11th best university under 50 years, and in 2015 it was rated as the best university in the country by Brazil's Ministry of Education.

---

### Unicamp in numbers:

---

- 40.362 students, 1.060 foreign students, 66 undergraduate courses
- Top Brazilian university in number of published articles per faculty member.
- Responsible for ~8% of Brazil's articles in scientific journals.
- 46% of our graduate courses are top grades (ranked by CAPES/MEC).
- Top Brazilian university in number of patents.
- 15th: world's top 50 universities under 50 years old.
- 2nd: Latin America's top 10 universities (QS Ranking).
- 9th: top BRIC's universities.

See more at: [https://en.wikipedia.org/wiki/University\\_of\\_Campinas](https://en.wikipedia.org/wiki/University_of_Campinas) or <http://www.unicamp.br/unicamp/>

---

## School of Medical Sciences (FCM UNICAMP)

---

The **School of Medical Sciences** (Portuguese: *Faculdade de Ciências Médicas, FCM*) offers courses at the undergraduate level in medicine, nursing, pharmacy and speech therapy, as well as courses at graduate level (specialization, master's, doctorate, and medical residency).

See more at: [https://en.wikipedia.org/wiki/University\\_of\\_Campinas\\_School\\_of\\_Medical\\_Sciences](https://en.wikipedia.org/wiki/University_of_Campinas_School_of_Medical_Sciences)

<https://www.fcm.unicamp.br/fcm/en>

---

## São Paulo Research Foundation

---



The São Paulo Research Foundation (FAPESP) is one of Brazilian leading funding agencies for scientific investigation. It supports research in all fields of knowledge through fellowships and grants in the State of São Paulo.

The State of São Paulo has a population of 45 million and generates 32% of Brazil's GDP. While São Paulo is home to 22% of the Brazilian population, the state responds for 44% of the scientific articles published in international journals coming out of Brazil.

FAPESP invested around US\$ 332 million in research projects in 2017.

See more at: <http://www.fapesp.br/researchinbrazil> or <http://www.fapesp.br/en/agreements>



## Internet Connection

---

For those with wireless devices, there will be free Wi-Fi available at the conference venues and hotel.



## Climate

---

November in Campinas is a spring month.

The average high temperature is near 28.3°C (82.9°F) and the low temperature is around 16.9°C (62.4°F). The record high temperature is 37.8°C (100°F).

You can check weather forecast at:

<https://www.euronews.com/weather/south-america/brazil/campinas>

<https://www.timeanddate.com/weather/brazil/campinas>

## INFORMATION ABOUT THE VENUE

### Time Zone



After November 4th, time in Campinas is Summer (DST) [UTC-2 \(Brazilian Daylight Saving Time\)](#).

### Currency

R\$ € \$ ¥ £

The unit of currency in Brazil is the real (plural is reais). It is represented by the symbol R\$.

Exchange rates vary. Please consult the websites prior to travel for up to date information, such as <https://www.oanda.com/currency/converter/>.

### Electrical



The standard voltage in Brazil is 127 / 200 V with a standard frequency of 60 Hz.

The type of plug used in Brazil is a 3-pin type N, which could also accommodate a 2-pin type C plug as well. There are also some places which utilizes a 2-flat pin type A plug, as is used in the USA.

## INFORMATION ABOUT THE VENUE

### Accommodation at Visiting Professor's House (CPV Hotel)

---

Av. Érico Veríssimo, 1251, Cidade Universitária, Campinas – SP, 13083-851, 00 55 19 3521.2810.

See more at <http://cpvunicamp.com.br/>

### Course Venue

---

#### ESPCA GACD Venue

Building of the Classrooms of the Faculty of Medical Sciences (Conjunto de salas de aula da Faculdade de Ciências Médicas da Unicamp)

Rua Tessália Vieira de Camargo, 126, Cidade Universitária Zeferino Vaz, Campinas – SP

Easier access: Rua Albert Sabin, s/n.

Reference: close to the Building of the Amphitheatre 5 of the Faculty of Medical Sciences (Ponto de referência: Ao lado do Anfiteatro 5 da Faculdade de Ciências Médicas).

---

**Brian Oldenburg**

The University of Melbourne

Australia

[brian.oldenburg@unimelb.edu.au](mailto:brian.oldenburg@unimelb.edu.au)



Brian Oldenburg is Professor of Non-Communicable Disease Control in the School of Population and Global Health, University of Melbourne, Australia and Director of the global WHO Collaborating Centre of Implementation Research for Prevention & Control of NCDs. He researches health policy, global health and the prevention and control of diabetes, heart disease and co-morbid mental health conditions. He has undertaken many 'real world' intervention trials, their evaluation and scale-up in health-care settings, work organisations, schools and other community settings in Australia and other countries, including Finland, China, Malaysia, India, Sri Lanka and South Africa. He has also developed and researched new technologies and m-Health interventions to improve health. He has produced more than 350 publications. He has been a recent Honorary Professor at research organisations and universities in Finland, Hong Kong, India and China. He has also participated in capacity building and training initiatives on behalf of US National Institutes of Health, the Global Alliance for Chronic Diseases and the World Health Organisation.

---

**Celina Gorre**

*GACD Secretariat*

*United Kingdom*

[c.gorre@ucl.ac.uk](mailto:c.gorre@ucl.ac.uk)



Celina Gorre is the Executive Director of the Global Alliance for Chronic Diseases. In that role, she heads up the GACD Secretariat team based at UCL in London. Previously, Celina was the Managing Director of the Foundation for the United Nations Global Compact. From 2007-2009, Celina was in the field with UNFPA and UNICEF in Angola as a Senior HIV/AIDS Advisor, advising the government of Angola on its HIV strategy, child survival and nutrition programmes, and companies on their social and community investments. Celina holds a Masters in Public Health in Epidemiology from UCLA and a Masters in Public Administration from the Kennedy School of Government at Harvard University.



---

**Edward Gregg**

*US Centers for Disease Control*

*USA*

[edg7@cdc.gov](mailto:edg7@cdc.gov)



Dr. Edward Gregg serves as Chief of the Epidemiology and Statistics Branch in the Division of Diabetes Translation at Centers for Disease Control and Prevention, where his current efforts involve oversight of the National Diabetes Surveillance system and the integration of surveillance, epidemiology, health services, and economic studies at CDC to better guide health policy for diabetes. His research interests include surveillance of national and international trends in diabetes and related risk factors as well as the impact of lifestyle interventions on the risk of diabetes and related complications. Dr. Gregg has published over 180 articles and chapters in chronic disease epidemiology and prevention and is a lead or co-investigator in several national multi-center studies, including Natural Experiments in Translation for Diabetes (NEXT-D) and the Look AHEAD Study.

---

**Fernando Cendes**

*University of Campinas and BRAINN (Brazilian Institute of Neuroscience and Neurotechnology), SP*

*Brazil*

[fcendes@gmail.com](mailto:fcendes@gmail.com)



Fernando Cendes is Full Professor of Neurology at the Department of Neurology, State University of Campinas (UNICAMP), Brazil, and serves as the Coordinator of the Epilepsy Surgery Program, Department of Neurology. He is board certified in Neurology, in Clinical Neurophysiology and in Diagnostic Neuroradiology. Dr. Cendes is a former EEG (1989) and Epilepsy Fellow (1991-1997) at the Montreal Neurological Institute, and received his PhD degree in Neuroscience at McGill University in 1996. He is past Chair of Diagnostic Methods Commission of the ILAE and a member of the Editorial board of several journals including Neurology, Epilepsia, Epilepsy Research and Epilepsy and Behavior. His research and publications are focused in Epilepsy and Neuroimaging.

---

**Li Li Min**

*University of Campinas and BRAINN (Brazilian Institute of Neuroscience and Neurotechnology), SP*

*Brazil*

[limin@g.unicamp.br](mailto:limin@g.unicamp.br)



Prof. Li's main research lines include epilepsy, stroke, neuroimaging and neuroscience and has published over 180 articles in national and international magazines, and more recently start a research line on healthcare management and innovation. Prof. Li is coordinator of Demonstration Project (DP) on Epilepsy in Brazil part of the Global

Campaign Epilepsy Out of the Shadows under the auspices of World Health Organization, International League Against Epilepsy and International Bureau for Epilepsy

---

**Paulo Saldiva**

*University of São Paulo  
Brazil*  
[pepino@usp.br](mailto:pepino@usp.br)



Prof. Saldiva is the -Director of the Institute of Advanced Studies, University of São Paulo, Brazil; Coordinator of the National Institute of Integrated Risk Assessment – National --Research Council, Brazil; Coordinator of the Project “The use of modern autopsy techniques to investigate human disease (FAPESP 2013/21728-2); Member of the Brazilian Academy of Sciences; Member of the WHO Panel involved in the elaboration of Global Air quality Guidelines; and Member of the IARC Panel for the assessment of carcinogenicity of air pollution.

---

**Pilvikki Absetz**

*University of East Finland, Finland  
Finland*  
[pilvikki.absetz@gmail.com](mailto:pilvikki.absetz@gmail.com)



I have 20 yrs of experience in design, dissemination and implementation of behavioral interventions to promote health and prevent cardio-metabolic diseases in diverse real-world settings in HIC and LMIC. I’ve collaborated with private, public, and non-governmental organizations, and as an SME partner in international research projects.

---

**Rachel Sturke**

*Fogarty International Center, National Institutes of Health  
USA*  
[sturkerachel@mail.nih.gov](mailto:sturkerachel@mail.nih.gov)



Dr. Rachel Sturke currently serves as Deputy Director and Senior Scientist in the Division of International Science Policy, Planning, and Evaluation and the Center for Global Health Studies at the Fogarty International Center at NIH. In this role, she oversees a portfolio of global implementation science projects and the program evaluation portfolio for Fogarty. Dr. Sturke's work in implementation science includes a focus on building research capacity in implementation science in low- and middle-income countries and using innovative platforms to bring implementation scientists together with decision-makers and program implementers from LMICs. Dr. Sturke obtained her PhD in population, reproductive, and women's health from Johns Hopkins University Bloomberg School of Public Health with a focus on gender, violence and HIV in South India. She received both a Masters in Public Health and a Masters in International Affairs from Columbia University.

---

**Rodrigo Moreno-Serra**

*University of York  
United Kingdom*  
[rodrigo.morenoserra@york.ac.uk](mailto:rodrigo.morenoserra@york.ac.uk)



Rodrigo Moreno-Serra is a Reader (Associate Professor) and Co-Team Leader of the Global Health Team at University of York. Rodrigo's research interests include a variety of topics in the fields of health economics, global health and development economics. He has published academic papers and policy reports dealing with the impact evaluation of health policies and programmes in developing and developed countries, from both the methodological and applied points of view. He is currently performing research work on the topic of international comparisons of health systems performance, with a particular interest in health system financing and financial risk protection. Rodrigo is very keen on using economic analysis as a tool to contribute to current health policy debates; an example of this is his ongoing work on universal health coverage, a topic very much in the current agenda of national governments and international organisations.

---

**Sailesh Mohan**

*Public Health Foundation of India  
India*  
[smohan@phfi.org](mailto:smohan@phfi.org)



Dr. Sailesh Mohan is an Additional Professor at PHFI. He is also an Honorary Professor at the Deakin University, Melbourne, Australia. At PHFI, he is involved in chronic non-communicable disease (NCD) research, teaching and training. He leads various NCD research projects focused on knowledge translation for health system strengthening.

---

---

**Victor Wünsch Filho**

*Public Health School, University of São Paulo, SP*

*Brazil*

[wunsch@usp.br](mailto:wunsch@usp.br)



**Victor Wünsch Filho** is Professor at the University of São Paulo, School of Public Health, Department of Epidemiology, where he is involved in undergraduate and graduate education. He is graduated in Medicine, Master in Preventive Medicine and PhD in Public Health. His main research areas include: epidemiology of cancer and occupational health. He has experience in conducting multicenter projects on the etiology and prognosis of cancer, particularly tumors of the head and neck, lung and childhood leukemia, including the study of environmental, occupational, behavioral, social, biological and genetic risk factors. These projects are part of international consortia of research: INHANCE (International Head and Neck Cancer Epidemiology Consortium) and CLIC (Childhood Leukemia International Consortium). The most frequent terms in the context of their scientific production are cancer, occupational cancer, case-control studies, epidemiology and occupational health.

---

**Vilma Irazola**

*Institute for Clinical Effectiveness and Health Policy (IECS)*

*Argentina*

[virazola@iecs.org.ar](mailto:virazola@iecs.org.ar)



Dr Vilma Irazola is a cardiologist and epidemiologist. She is the Director of the Department of Chronic Diseases at the Institute for Clinical Effectiveness and Health Policy (IECS) and Director and PI of the South American Center of Excellence for Cardiovascular Health (CESCAS) at IECS. Vilma is professor of Outcome Research and Advanced Statistical Methods at the University of Buenos Aires, and visiting professor of The Bernard Lown Cardiovascular Health Program at Harvard, and at the Mc Silver Institute for Poverty and Research of New York University. Her recent work has focused on implementation science and scaling-up public health innovations in cardiovascular health and cancer.

---

**Ai Aoki**

*Department of Health Policy, National Center for Child Health and Development*



*Japan*  
[sayran.n@gmail.com](mailto:sayran.n@gmail.com)

I am interested in health projects targeting public rather than research on specific diseases with low prevalence. Based on my clinical experience, I am especially interested in mental health. I have experience of working on a study on exercise intervention among Mongolian children.

---

**Alim Mohammed**

*The George Institute for Global Health, India*  
[malim@georgeinstitute.org.in](mailto:malim@georgeinstitute.org.in)



Have good experience of 11 years in clinical research and managing academic trials and conducting process evaluation with complex interventions. I am interested in cardiovascular disease research and has been part of large randomized controlled trial, The ATTEND trial. I hold a PhD degree from Jawaharlal Nehru Technological University, Hyderabad.

---

**Allan Calsavara**

*Federal University of Ouro Preto*  
*Brazil*  
[allancalsavara@ufop.edu.br](mailto:allancalsavara@ufop.edu.br)



Allan Calsavara, M.D., MSc., Ph.D. is a Professor actively involved in both clinical and research components in the Department of Internal Medicine, Federal University of Ouro Preto, Brazil. His main line of academic research is dedicated to properly understanding behavioral and cognitive changes after sepsis through the study of potential biomarkers, psychoneuroimmunology, neuroinflammation and neurodegeneration. He is directly interested to promote the uptake of effective interventions to reduce the impact of sepsis associated encephalopathy into clinical routine practice, improving population health, aside to collaborate and network more globally.



---

**Ana Loch**

*STD/AIDS-SP Reference and Training Center*

*Brazil*

[anapaulaloch@gmail.com](mailto:anapaulaloch@gmail.com)



Pharmacist from the Regional University of Blumenau. PhD in Health Policy, Planning and Management research in the Department of Preventive Medicine of the Medical School of the University of São Paulo (doctoral studies at Carlos III Health Institute - National Epidemiology Center of Spain, under the supervision of Prof. Asunción Díaz Franco). She has worked as a researcher in projects focused on the evaluation of health services in primary care, STI and HIV / AIDS, viral hepatitis and tuberculosis at University of Sao Paulo (2014-2018) and in projects focused on diabetes, hypertension and adherence to treatment of chronic disease (2010 - 2014). She is a researcher at the DST/AIDS-SP Reference and Training Center and the SP-proso Research Group in project focused on the Social Development of Children at the Department of Preventive Medicine at USP.

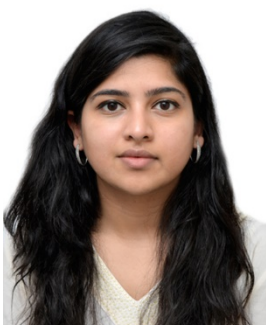
---

**Ananya Gupta**

*Max Healthcare Institute Ltd.*

*India*

[ananya.gupta@maxhealthcare.com](mailto:ananya.gupta@maxhealthcare.com)



I lead operations for 'NIHR Global Health Research Unit on T2D, CVD in South Asians' in North India. Led by Imperial College in Bangladesh, India, Pakistan and Sri Lanka, this translational research will strengthen disease surveillance, test frontline health worker and digital interventions and disseminate findings to policy makers. Other research interests: determinants of health-related behaviour.

---

**Angela Aifah**

*New York University (NYU) Medical Center*

*United States*

[angela.aifah@nyumc.org](mailto:angela.aifah@nyumc.org)



Dr. Aifah is a T-32 Postdoctoral Fellow at NYU Medical Center in New York. Her research goals and priorities are to conduct robust prevention and intervention research to address the burden of co-occurring non-communicable and communicable diseases to inform evidence-based practices for integrating care and management in low-resourced settings and regions.

---

**Annelysse Jorgenson**

*Glasgow Caledonian University  
United Kingdom*

[Annelysse.Jorgenson@gcu.ac.uk](mailto:Annelysse.Jorgenson@gcu.ac.uk)



My research interests are in the implementation of infection prevention and control guidelines in different contexts, and more specifically, what processes used for national level implementation in these different contexts are effective. Through my current research, I have experience in designing implementation process evaluations and using implementation frameworks for analysis.

---

**Artyom Gil**

*I.M.Sechenov First Moscow State Medical University  
Russian Federation*

[artyom5@mail.ru](mailto:artyom5@mail.ru)



I received MD degree from the South Urals State Medical University, Russia, and practiced Internal Medicine for 4 years. In 2002 I obtained Master of Public Health Degree in the Hebrew University, Israel. In 2010 I defended my PhD thesis in Public Health in the I.M.Sechenov First Moscow State Medical University, Russia. I worked for 4 years at the London School of Hygiene and Tropical Medicine as a research fellow in the prospective cohort study investigating alcohol attributable mortality among working age Russian males. My research interests include epidemiology and control of alcohol and tobacco, health policy aimed at reduction of burden of non-communicable diseases across countries, brief alcohol interventions, health care reforms.

---

**Bruna de Andrade Ramos**

*Botucatu Medical School - UNESP  
Brazil*

[bru\\_rar@hotmail.com](mailto:bru_rar@hotmail.com)



Post doctoral fellow at Botucatu Medical School, São Paulo State University (UNESP). Majored in Biomedical Sciences in the Biosciences Institute - UNESP and has Master and PhD degrees in Pathology in Pathology of Botucatu Medical School - UNESP. During her PhD she made a fellowship at Weill Cornell Medical School, New York – USA, under the supervision of Dr. Steven Witkin. She has studied different aspects of the field of Maternal and Child Health with emphasis on immune modulation in response to pathogens, genetic and epigenetic variability as well as infections of the female genital tract. Her current research focus on microRNAs as prospective biomarkers from peripheral blood of pregnant women with pregnancy complications.

---

**Christina Mavrogianni**

*Harokopio University  
Greece  
[cmavrog@hua.gr](mailto:cmavrog@hua.gr)*



Research Associate and PhD student in Dietetics at Harokopio University. Over the last 9 years I have been involved in several EU-funded projects. My research interests focus on the development and implementation of lifestyle interventions for the prevention and treatment of obesity and cardiometabolic factors in all life stages.

---

**Christina Kyriakos**

*University of Crete  
Greece  
[kyriakos@tobcontrol.eu](mailto:kyriakos@tobcontrol.eu)*



Christina Kyriakos, MPH of Greece is a public health researcher interested in tobacco control, health services research, and implementation science. She works on the GACD-funded project European Regulatory Science on Tobacco: Policy implementation to reduce lung diseases (EUREST-PLUS). Christina also has experience implementing tobacco dependence guidelines in health care organizations.

---

**Clarice Ribeiro Soares Araújo**

*Federal University of Paraíba  
Brazil  
[clariceribeiro@hotmail.com](mailto:clariceribeiro@hotmail.com)*



Occupational Therapist, Master in Rehabilitation Sciences. PhD student in Rehabilitation Sciences at Universidade Federal de Minas Gerais. Assistant Professor at Universidade Federal da Paraíba. She has worked in public and private practices in children and adolescents' acute and chronic mental health care, coordinated a project providing OT services to the community of children with disabilities. Currently investigating rehabilitation of children with developmental coordination disorder, motor skills disorders and learning disabilities. Research interests: evidence-based practice rehabilitation, cognitive intervention, neurodevelopmental and chronic acquired neurological conditions, occupational performance, disabilities, participation, social vulnerability, school settings, family and community centred care, knowledge translation.

---

**Daša Kokole**

*Esade/Maastricht University  
Spain/The Netherlands  
[dasa.kokole@esade.edu](mailto:dasa.kokole@esade.edu)*



My background is in psychology and health promotion; through several years of working for NGO in Slovenia I gained experience in research in the field of alcohol, and now I am pursuing PhD at Maastricht University on topic of process evaluation of brief alcohol intervention scale up in Latin America.

---

**David Meharg**

*University of Sydney  
Australia  
[david.meharg@sydney.edu.au](mailto:david.meharg@sydney.edu.au)*



A passionate Aboriginal health advocate, supporting culturally appropriate evidence-based practice and research. I've managed Aboriginal health services, clinical redesign and health promotion initiatives. I hold a Bachelor of Health Science, Master of Health Service Management and Master of Public Health. Currently coordinating an Aboriginal pulmonary rehabilitation trial and completing a PhD.

---

**David Heller**

*Arnhold Institute for Global Health, Icahn School of Medicine at Mount Sinai  
USA  
[david.heller@mssm.edu](mailto:david.heller@mssm.edu)*



I am a physician-investigator interested in the design and implementation of non-physician-led programs to control multiple chronic diseases in sub-Saharan Africa. My current work involves adapting a nurse-led maternal-child health program in rural Ghana for cardiovascular disease and depression. I also study approaches to hypertension control in Uganda.



---

**Elisa Maria Melo Silva**

Institute of Psychology at University of São Paulo  
Brazil

[lizzbr@gmail.com](mailto:lizzbr@gmail.com)



Ph.D student in Neurosciences and Behavior by the Institute of Psychology at University of São Paulo. Master in Production Engineering from the Federal University of Itajubá (UNIFEI). The dissertation is titled "Application of Agent-Based Simulation in the Development of a Simulation-based Learning Tool" with the themes Simulation-based Learning, Medical Devices, Usability, Neonatal Incubator and NICU. Specialization in Quality and Productivity (UNIFEI). Graduation in Mechanical Engineering (UNIFEI). Exchange in Mechanical Engineering and Energy at Université de Valenciennes et du Hainaut-Cambrésis (UVHC - France).

---

**Enita Phiri**

*Malawi Epidemiology and Intervention Research Unit*  
Malawi

[enitahill@yahoo.com](mailto:enitahill@yahoo.com)



I am an enthusiastic public health specialist with great interest in epidemiology. I have 5years work experience in health research in general and implementation of clinical trials in both rural and urban Malawi. Currently, I am leading implementation of treatment-support text-messaging trial for type 2 diabetes patients in Malawi.

---

**Enying Gong**

*The University of Melbourne*  
Australia

[egong@student.unimelb.edu.au](mailto:egong@student.unimelb.edu.au)



Originally from China, I received training in both social science and public health in China, US and Australia and have worked for WHO, NGOs and research institutions. My recent researches focus on designing, implementing and evaluating cost-effective community-based interventions in resource-limited settings for improving the control of cardio-metabolic diseases.



---

***Evangelia Karaglani***



*Harokopio University  
Greece  
[evkaraglani@gmail.com](mailto:evkaraglani@gmail.com)*

Evangelia Karaglani (MSc, PhD student) is a Dietitian-Nutritionist and a Research Associate at Harokopio University, with more than four years of relevant experience. Her research interests evolve around the designing and implementation of behavioural and lifestyle interventions for the prevention and management of chronic diseases in children and adults.

---

***Ezinne Uvere***



*University of Ibadan  
Nigeria  
[ezinneuvere13@gmail.com](mailto:ezinneuvere13@gmail.com)*

Ezinne O. UVERE (MPH) whose research interests include NCDs, Health System Research is an early career researcher with >10 years of progressive experience in coordination and implementation of collaborative research initiatives funded internationally. She's a Research Coordinator with the College of Medicine, University of Ibadan, Nigeria on an NIH-funded grant.

---

***Felipe Mourato***



*Círculo do Coração de Pernambuco of Federal University of Pernambuco  
Brazil  
[felipe.a.mourato@gmail.com](mailto:felipe.a.mourato@gmail.com)*

Physician by Federal University of Pernambuco. MSc and PhD in Biology Applied to Health by the Keizo Asami Immunopathology Laboratory from Federal University of Pernambuco. Had experience in the following research topics: screening methods for high blood pressure in children and adolescents, use of telemedicine in the screening and treatment of congenital heart disease and risk factors for congenital heart disease in Down syndrome. Actually is medical resident in Nuclear Medicine from Royal Portuguese Hospital of Pernambuco.

---

**Gillian (Jill) Murphy**

University of British Columbia  
Canada  
[jill.murphy@ubc.ca](mailto:jill.murphy@ubc.ca)



I am a postdoctoral fellow in the Department of Psychiatry at the University of British Columbia and received my PhD from Simon Fraser University in 2016. My research focuses on using implementation science to improve implementation and scale-up of mental health interventions in LMICs. My current work takes place in China and Vietnam, on studies funded by GACD, Grand Challenges Canada and the Canadian Institutes of Health Research.

---

**Irina Svyato**

SKOLKOVO Health Economics and Management Centre  
Russian Federation  
[Irina\\_Svyato@skolkovo.ru](mailto:Irina_Svyato@skolkovo.ru)



Current position: Head of Strategic Consulting Unit at Moscow School of Management SKOLKOVO. Key research interests: development and implementation of drug reimbursement system in Russia with piloting project in several selected regions; introduction of value-based healthcare system in Russia. Prior experience: 20+ years of experience in healthcare, applied microbiology, biotechnological and pharmaceutical industry; 15 years in strategic management consulting. Relevant expertise: advised U.S. clients extensively on Bio-Technology Commercialisation Programs in CIS; Country Lead in Uzbekistan and Russia on Biological Threat Reduction Program, led assignments in Russia and other countries in healthcare, pharmaceutical, medical tourism.

---

**Isabelly Rodrigues Regalado**

Federal University of Rio Grande do Norte  
Brazil  
[isabellyrodrigues@hotmail.com](mailto:isabellyrodrigues@hotmail.com)



PhD in Physiotherapy at the Federal University of Rio Grande do Norte in progress, in the area of concentration and intervention in the nervous and musculoskeletal systems. She was a substitute professor at UFRN with the disciplines of child health, hydrotherapy, prosthesis and orthosis, Psychomotricity and Practical supervised Practices in Basic Care. Worked as a researcher in projects focused implementation of the domain of participation in International Classification of Functioning, Disability and Health in physical therapists of clinical practice in specialized health child, and Knowledge Translation in developing countries.

**Ishita Rawal**

*Centre for Chronic Disease Control (CCDC), Delhi*

*India*

[ishita@ccdcindia.org](mailto:ishita@ccdcindia.org)



I am a senior research fellow at the Centre for Chronic Disease Control, India with over five years of experience in the area of non-communicable diseases. My specific set of skills include development of study protocols, program implementation, data analysis and management, writing peer reviewed manuscripts, preparation of grant proposals.

**Janaka Pushpakumara**

*Rajarata University of Sri Lanka*

*Sri Lanka*

[janakatechno@gmail.com](mailto:janakatechno@gmail.com)



Education: MBBS, PgD (Psychology), MSc (Community Medicine), MPhil (Self-harm). Research experience as the PI: epidemiology of self-harm, rate and pattern of repetition of self-harm, associations of help-seeking, life-skills, emotional-intelligence, psychiatric-disorders with self-harm. Quasi experimental-study to assess life-skills training as a preventive strategy. Studies to determine feasibility of introducing life-skills to school-curriculum, school-counselors' role in training life-skills.

**Jega Janani Shanthosh**

*The George Institute for Global Health, Australia*

*Australia*

[jmuhunthan@georgeinstitute.org.au](mailto:jmuhunthan@georgeinstitute.org.au)



Jan Shanthosh is a public health lawyer and Research Fellow at The George Institute. Jan has a background in international human rights and health. Her work involves the evaluation of complex interventions in non-communicable disease prevention. Her work has been published in BMJ Global Health and The Lancet.

---

**Jessica Salles Henrique**

*Federal University of São Paulo*

*Brazil*

[je.salles@yahoo.com](mailto:je.salles@yahoo.com)



Currently PhD student in the Neuroscience/Neurology program at Federal University of São Paulo. Master of Science in Neuroscience/Neurology program of Federal University of São Paulo (2018). Specialization in Physical Exercise Prescription in the Treatment of Chronic and Associated Diseases at Federal University of São Paulo (2016). Bachelor of Physical Education at Metropolitan University of Santos (2009). Her work focus on physical exercise, aging and brain health.

---

**Job van Boven**

*University Medical Center Groningen*

*Netherlands*

[jobvanboven@gmail.com](mailto:jobvanboven@gmail.com)



I do health economics and real-world outcomes research mostly in the fields of respiratory diseases, diabetes, multimorbidity and global health. I obtained my PhD in 2015 and am currently involved in various international efforts such as GACD Multimorbidity and Data Standardisation workgroups.

---

**Josephine Kisato**

*Moi University-AMPATH*

*Kenya*

[andesiaj@yahoo.com](mailto:andesiaj@yahoo.com)



I am a graduate in Bsc. Public health and diploma holder in Project planning and management with more than ten years of experience in research. My research interests relate to implementation science, health services research, addressing of research challenges and issues in regards to access of treatment and care of NCD's.



---

**Juliana Valente**

*Federal University of São Paulo*

*Brazil*

[jyvalente@gmail.com](mailto:jyvalente@gmail.com)



Psychologist from Pontifícia Universidade Católica do Rio Grande do Sul (PUCRS). Master's degree in Health Sciences at Universidade Federal de Ciências da Saúde de Porto Alegre (UFCSPA) and Ph.D. student in Public Health at Universidade Federal de São Paulo (UNIFESP). Post-Graduation Lato Sensu in Psychotherapy of Adults, Children and Adolescents in Universidade Federal do Rio Grande do Sul (UFGRS) and in Addiction in Universidade Federal de Ciências da Saúde de Porto Alegre (UFCSPA). Researcher in the field of drug use prevention focuses on the effect of School-based prevention program on adolescent drug use and on the role of parenting predicting adolescent drug use.

---

**Kalebe Silva**

*Federal University of Pernambuco*

*Brazil*

[kalebe.sva@gmail.com](mailto:kalebe.sva@gmail.com)



Master of Science in Therapeutic Innovation by Federal University of Pernambuco (2018). Graduated in Biomedical Science by Federal University of Pernambuco (2016). Currently linked to Laboratory of Immunomodulation and New Therapeutic Approaches (LINAT) and Nucleus of Therapeutic Innovation Research Suely Galdino (NUPIT-SG) as doctorate student. He works in research projects of inflammatory chronic diseases, mainly rheumatic ones, like SEL, psoriasis, osteoarthritis, rheumatoid arthritis, systemic sclerosis and ankylosing spondylitis, in order to find biomarkers of diagnosis, prediction and therapeutic response and new therapeutic targets.

---

**Kaloyan Tsochev**

*Medical University-Varna*

*Bulgaria*

[kalooyan@abv.bg](mailto:kalooyan@abv.bg)



Since 2015 I'm a researcher in the Feel4Diabetes project (EU-funded 2014-2019), aiming to develop, implement and evaluate an evidence-based and potentially cost-effective and scalable intervention program to prevent type 2 diabetes across Europe. In 2017 our team won a national grant for the research project "Cardiovascular and metabolic risk related to the visceral fat tissue in patients with type 1 diabetes", that is also the subject of my PhD education.



---

**Kanika Chopra**

*Centre for Chronic Disease Control (CCDC), Delhi  
India*  
[kanika@ccdcindia.org](mailto:kanika@ccdcindia.org)



I am a nutritionist by training and currently working on GACD funded LIVING study. My ongoing research focuses on implementation research that aims to develop a new lifestyle intervention program that has a high probability of being feasible, acceptable and cost-effective in the South Asian context for women with prior GDM. As part of my dissertation I have worked on “Thermal degradation of cooking oils at smoke point ” to assess the thermal and storage stability of heated oils over a 30 day storage period. My research interests include Life course Nutrition Epidemiology, Chronic disease research and qualitative research.

---

**Karla Espirito Santo**

*The University of Sydney  
Australia*  
[karla.santo@sydney.edu.au](mailto:karla.santo@sydney.edu.au), [karlasanto@gmail.com](mailto:karlasanto@gmail.com)

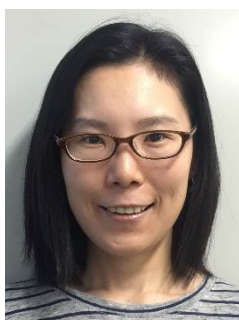


Karla is a cardiologist from Rio de Janeiro, and has recently finished a PhD degree at The University of Sydney. Karla’s research interests are prevention of cardiovascular disease and mobile technology to improve cardiovascular health. While in Australia, Karla has participated in several RCTs using text-message programs to improve lifestyle behaviours. As part of her PhD, Karla has pioneered a systematic stepwise process to identify high-quality medication adherence apps. She led a RCT evaluating the effectiveness of these apps and published the results in Heart. She is now involved in a project investigating a club-based strategy to improve adherence to anti-hypertensive medications in Nigeria. Karla has 16 publications in international journals.

---

**Kaoruko Seino**

*Center for Public Health Sciences, National Cancer Center  
Japan*  
[seino.ith@tmd.ac.jp](mailto:seino.ith@tmd.ac.jp)



Kaoruko Seino is a researcher in the field of social medicine and cultural behavior sciences. Dr. Seino’s research interest covers environmental change and mitigating practice implementation for those health impacts. Recently, she has been involved in projects of noncommunicable diseases prevention and control.

---

**Lan Guo**

*Sun Yat-sen University*

*China*

[guolan3@mail.sysu.edu.cn](mailto:guolan3@mail.sysu.edu.cn)



I am a senior researcher of Sun Yat-sen University. I obtained my one Doctorate degree in medicine from Sun Yat-sen University, China, and my another Doctorate degree in Public Health Science from Université Libre de Bruxelles (ULB), Belgium. My particular field of interest is psychological, behavioral and social epidemiology.

---

**Larissa Rolim de Oliveira**

*Faculty of Medical Sciences of Santa Casa*

*Brazil*

[larissa.rolim26@gmail.com](mailto:larissa.rolim26@gmail.com)



Masters degree in molecular bioprospection in Regional University of Cariri-CE (2014), and Nurse in Federal University of Campina Grande (2011). Have expertise in nursing and pharmacology of central nervous system, pharmacology of natural products. In Master degree, I had worked with animal model of anxiety, epilepsy and depression with natural product, hidroalcoholic extract of leaves Passiflora Cincinnata. Currently PhD student in health Science in Faculty of Medical Science of Santa Casa of Sao Paulo-SP, at the moment I working in Department Physiology Science of FCMSC-SP with stroke in animal model and natural products (Peruvian Maca) that act in central nervous system as an antioxidant and neuroprotector.

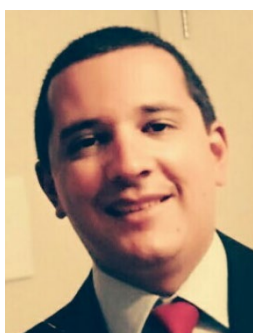
---

**Leonardo Pozza**

*Federal University of Pampa*

*Brazil*

[leonardo\\_pozza@yahoo.com.br](mailto:leonardo_pozza@yahoo.com.br)

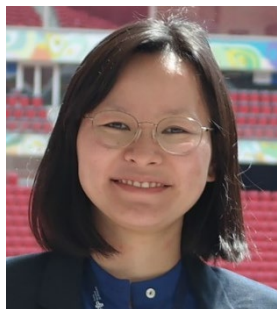


Leonardo is Dietician and obtained his Ph.D. in Epidemiology working with one of the Pelotas' cohort studies at Federal University of Pelotas, Brazil. During his Ph.D., he spent 12 months as visitor with the Growth and Development program of Cambridge University's Epidemiology Unit. Currently, he is adjunct professor at Nutrition College of Federal University of Pampa. He is expert in Nutritional Epidemiology and have published several studies which focused on anthropometry, body composition and body shape and their different techniques. Furthermore, he has also experience in food consumption analysis and dietary intake studies.

---

**Liza Uchimura**

*Faculty of Medicine of University of São Paulo  
Brazil  
[lytuchimura@gmail.com](mailto:lytuchimura@gmail.com)*



Liza Uchimura is family physician, researcher in health policy with master's in sciences, and PhD student at the Department of Preventive Medicine, University of Sao Paulo. Liza led the Policy, Planning and Management of Health Care Regions and Networks in Brazil. Her experience has involved theoretical, policy and empirical analysis which has used both quantitative and qualitative methods. Her PhD thesis topic and related research is focused on the interface(s) between primary care and emergency care. Specifically, her research is intended to identify and understand how policy, structural, geographic and organizational factors impact on the interface(s) between primary and emergency care.

CV link: <http://lattes.cnpq.br/6839802017664185>

---

**Lorrein Muhwava**

*University of Cape Town  
South Africa  
[lorrein.muhwava@gmail.com](mailto:lorrein.muhwava@gmail.com)*



An MPH graduate with experience in public health research and project coordination. My focus area is health systems research in the context of NCDs. I am completing a PhD on the management of gestational diabetes in the public health sector. My PhD forms the formative research for the IINDIAGO trial.

---

**Lucas Santos**

*Federal University of Rio Grande do Sul  
Brazil  
[lucaspsantos87@gmail.com](mailto:lucaspsantos87@gmail.com)*



Holds a Bachelor of Physical Education degree from Universidade Federal do Rio Grande do Sul (2010), having also completed a Master's Degree in Health Sciences: Cardiovascular Sciences from the Faculty of Medical Sciences of Universidade Federal do Rio Grande do Sul (2015). Is currently a PhD candidate in the same program, receiving a CAPES scholarship. Took part in a "Sandwich PhD" program in which was an intern from the Kinesiology department at University of Connecticut and from the cardiology division at Hartford Hospital, USA.

---

**Luiz Hespanhol**



*University City of São Paulo (UNICID)*

*Brazil*

[luiz.hespanhol@unicid.edu.br](mailto:luiz.hespanhol@unicid.edu.br)

Luiz Carlos Hespanhol Junior, PhD - Associate Professor Masters and Doctoral Programs in Physical Therapy Universidade Cidade de São Paulo (UNICID). Collaborative Researcher Amsterdam Public Health research institute (APH) Department of Public & Occupational Health (DPOH) VU University Medical Center Amsterdam (VUmc) The Netherlands.

---

**Manjula Weerasinghe**



*South Asian Clinical Toxicology Research Collaboration*

*Sri Lanka*

[manjugaya@yahoo.com](mailto:manjugaya@yahoo.com)

I am a public health researcher from Sri Lanka. My research interest is pesticide-suicide prevention through public health interventions in low and middle income countries.

---

**Maria Ramos Junqueira**



*University of São Paulo*

*Brazil*

[merjunqueira@usp.br](mailto:merjunqueira@usp.br)

Maria graduated in biological sciences from the State University of Feira de Santana (UEFS). She is a PhD student at the Department of Epidemiology of the School of Public Health of the University of São Paulo. She is an assistant professor of the University of the State of Bahia. She is certified by the United Nations Children's Fund (UNICEF) for the development of educational activities with children and adolescents, and participated as a mediator in workshops with adolescents in social vulnerability from poor communities in Salvador, Bahia. She currently develops projects on the following topics: epidemiology, cancer (particularly, acute lymphocytic leukemia in childhood), cesarean section, information systems on live births.



---

**Michelle De Siqueira Tosin**

FEDERAL FLUMINENSE UNIVERSITY

Brazil

[michellehyczy@gmail.com](mailto:michellehyczy@gmail.com)



Nurse, Sanitary Surveillance Specialist, Master in Nursing and PhD student in Health Care Sciences. Research member of the DBS Group of UNIFESP. Experience in Neurorehabilitation and Neuroscience with emphasis on Movement Disorders. Member of the International Parkinson and Movement Disorder Society, of the Brazilian Academy of Neurology and of the Brazilian Nursing Association.

---

**Oscar Guillermo Flores Flores**

Universidad de San Martin de Porres

Peru

[ofloresf@usmp.pe](mailto:ofloresf@usmp.pe)



I am a Peruvian physician. In 2016, I obtained an MSc in Global Health from University College London. Currently, I am a Fogarty Research Fellow. My main research interest is to assess the role of mental health on the quality of life in people with COPD, and to understand how mental health services can be delivered within a peri-urban community in Lima, Peru.

---

**Patricia Alupo**

Makerere University Lung Institute

Uganda

[alupopat@gmail.com](mailto:alupopat@gmail.com)



Internal medicine physician, recently completed postgraduate training in internal medicine (2.5 years ago), with interest in pulmonology and pulmonary research. Currently a pulmonary research fellow at the Makerere university lung institute, and recently won a grant to carry out a project that has an implementation science aspect. Currently working as study coordinator for Global Excellence in COPD outcomes (GECO) project- Uganda.



---

**Praveen Pradeep**



*All India Institute of Medical Sciences, New Delhi*  
*India*  
[praveen.aims@gmail.com](mailto:praveen.aims@gmail.com)

I am an epidemiologist by training with eight years of experience in diabetes related research. My research interest includes epidemiology of youth onset diabetes, development and testing of real world intervention programs for the prevention and management of youth onset diabetes in developing countries.

---

**Praveen Devarsetty**



*The George Institute for Global Health, India*  
*India*  
[dpraveen@georgeinstitute.org.in](mailto:dpraveen@georgeinstitute.org.in)

I lead the primary healthcare research at the George Institute for Global Health, India. I am a public health researcher with thorough knowledge of epidemiological study designs and having a keen interest in systems based innovations to address inequities related to chronic diseases. I have a background in medicine from MKCG Medical College, India, and post-graduate degrees from Osmania Medical College, India (MD in Community Medicine, 2008), and University of Sydney, Australia (PhD, 2015).

---

**Priscila Costa**



*Federal University of Sao Paulo*  
*Brazil*  
[pricosta84@yahoo.com.br](mailto:pricosta84@yahoo.com.br)

Pediatric nursing professor at Federal University of Sao Paulo. PhD visiting scholar at School of Nursing Duke University (North Carolina-USA), PhD. Neonatal Nurse Specialist and Health Services Manager Specialist. Currently working on educational and research activities related to early childhood development and childcare. Research interests include promoting positive parenting behaviors and child development at primary care health services and daycare centers. I am developing a research project about the effects of a group-based intervention to promote bonding and responsive care to the child for first-time parents living in social vulnerability.

---

**Rafael Aiello Bomfim**

*Federal University of Mato Grosso do Sul  
Brasil  
[aiello.rafael@gmail.com](mailto:aiello.rafael@gmail.com)*



He holds a bachelor's degree in Dentistry from the University of São Paulo (2004), a Master's degree in Social and Preventive Dentistry from the School of Dentistry, University of São Paulo (2009) and a PhD in Social and Preventive Dentistry from the University of São Paulo, School of Dentistry (2013). Adjunct Professor at Federal University of Mato Grosso do Sul (UFMS) and pos doc researcher from Public Health School at University of São Paulo (FSP-USP). He has experience in Dentistry, with emphasis on Social and Preventive Dentistry, working on: Epidemiology and Oral Health Surveillance, Bioethics, Water Fluoridation, Ethnic Inequalities in Oral Health, Multilevel Analysis and Structural Equation Modelling.

---

**Reginaldo Adalberto Luz**

*School of Nursing, University of Sao Paulo  
Brasil  
[reginaldo.enfermeiro@gmail.com](mailto:reginaldo.enfermeiro@gmail.com)*



Registered nurse with a Master of Science and currently a PhD student in the school of nursing at the University of Sao Paulo. Specialist in perioperative nursing and infection prevention and control. Professor in the nursing program at the Santa Casa de São Paulo School of Medical Sciences. Main research area is on intraocular infections following ophthalmologic surgeries. He was a member of the National Health Surveillance Agency (ANVISA) group that created the recommendations guide entitled "Measures to prevent endophthalmitis and Toxic Anterior Segment Syndrome related to invasive ophthalmological procedures", which was released in 2017.

---

**Saria Hassan**

*Yale School of Medicine  
United States of America  
[saria.hassan@yale.edu](mailto:saria.hassan@yale.edu)*



I am a physician scientist with an interest in using implementation science tools to design, implement and evaluate interventions to reduce cardiovascular risk worldwide. I am currently working with the Eastern Caribbean Health Outcomes Research Network (ECHORN), with Dr. Marcella Nunez-Smith, implementing a diabetes prevention project in the Caribbean.

---

**Shirley Ejoh**

*University of Ibadan  
Nigeria*  
[shirleyejoh@gmail.com](mailto:shirleyejoh@gmail.com)

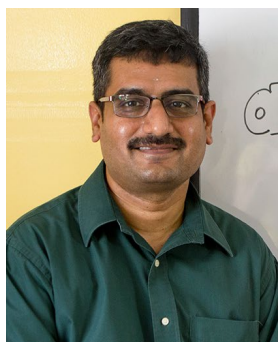


Research interest is nutrition, health and agriculture linkages in the food environment. Specifically, she researches on contribution of traditional vegetables to micronutrient intakes, factors influencing consumption of traditional leafy vegetables among various age groups and households. She developed 'Nutri-garden to fork project' to influence children's knowledge of healthy eating, preference and consumption of vegetables.

---

**Sridhar Vaitheswaran**

*Schizophrenia Research Foundation (India) - SCARF  
India*  
[sridhar.v@scarfindia.org](mailto:sridhar.v@scarfindia.org)



Previous and current grant funding:  
Project Coordinator - Infosys Dementia Care in SCARF (DEMCARES). Co-investigator – Cognitive Stimulation Therapy (CST) for dementia: International implementation in Brazil, India and Tanzania (CST-International.) Project Lead WHO multi-centre study to validate a tool to measure caregiver experience in dementia in India.

---

**Tarana Ferdous**

*ARK Foundation Bangladesh  
Bangladesh*  
[tarana.mailbox@gmail.com](mailto:tarana.mailbox@gmail.com)



For last four years, I have contributed to USAID-funded nutrition project, SHIKHA, and currently affiliated with multiple projects on reducing second-hand smoke exposure amongst non-smokers and survey of urban equity. I pursue to serve the next generation of human health science by advancing my knowledge in urban chronic disease research.

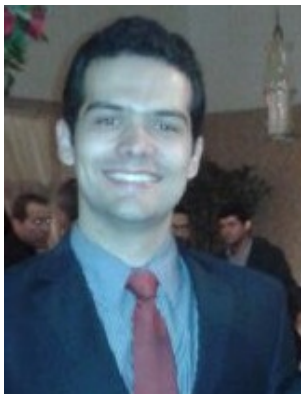
---

**Tiago Oliveira**

*University of Sao Paulo*

*Brazil*

[tiagopecanha@usp.br](mailto:tiagopecanha@usp.br)



Post-doctoral researcher at Faculty of Medicine of USP. PhD in Science (2012-2016) at the School of Physical Education and Sport, University of Sao Paulo (USP). Sandwich doctorate (2016) at the Research Institute for Sport and Exercise Sciences of Liverpool John Moores University (RISES-LJMU). Currently studying the effects of reducing sedentary time on cardiovascular regulation in rheumatoid arthritis patients. Research interests include "exercise training and chronic diseases", "cardiovascular autonomic control and exercise", "heart rate recovery", "heart rate variability", "thermoregulation", "rheumatoid arthritis", "endothelial function" and "hypertension".

---

**Tivani Mashamba-Thompson**

*University of KwaZulu-Natal*

*South Africa*

[Mashamba-Thompson@ukzn.ac.za](mailto:Mashamba-Thompson@ukzn.ac.za)



My research is motivated by a keen interest in global health and in reducing the disease burden in resource-limited settings through use of cutting-edge biomedical science techniques. Why is access to diagnostics a challenge in resource-limited settings? What drives the implementation of diagnostics in these settings?

---

**Xuanchen Tao**

*The George Institute for Global Health, China*

*China*

[ttao@georgeinstitute.org.cn](mailto:ttao@georgeinstitute.org.cn)



My research interests include diabetes, NCDs, primary healthcare, implementation science and health system research. I've done research projects in Vietnam and China. Right now, I'm engaged with a GACD funded cRCT trial which aims to improve the health conditions of T2DM patients through mhealth techniques and engaging lay family health promoters.



---

**Yena Lee**



*University of Toronto*

*Canada*

[yenalee.lee@mail.utoronto.ca](mailto:yenalee.lee@mail.utoronto.ca)

Yena Lee is a second-year PhD student at the University of Toronto with over 60 peer-reviewed publications. Her research focuses on the neurobiology of inflammatory and metabolic disturbances and predictors of clinical response to pharmacological treatments in mood disorders; Yena also regularly publishes meta-analytic reviews and collaborates internationally on various projects related to the mechanistic and translational, as well as the micro and macro, dimensions of her research interests.

---